



Aluminium **Profiles**

Elephant Drawer locks

Architectural **Hardware**

Modular **Kitchen** Accessories

Modular **Wardrobe** Accessories

Product Catalogue

Complete **HARDWARE** solutions under one roof

Affordable Luxury | Timeless **Performance** | Enduring **Quality**



Wardrobe Series





Trouser Rack



Trouser Rack

Product Name: Trouser Rack

Model No. – GH – 1001

Colour – Grey



Dimension (mm)	W	D	H
	350	455	115

Functional Features

Design

Pants Racks are design for rotatable, it bring you the fun of picking. Flannelette soft elastic, protection of the beloved clothes, no crease.

Function

With the fully concealed silent soft-closing slide, It can be keep the pants rack smooth sliding.

Feature

The overall push-pull design is more convenient to receive clothes, standard with the same color non-slip flocking tube, effectively prevent pants from falling down.

Material

Optional 3 color flocking tube, make it more practical and bring some warmth for the furniture.

Installation

Not divided about the installation, not restricted by cabinet, simple and convenient, let us install the product when more follow one's inclinations.



Trouser Rack

Product Name: Trouser Rack

Model No. – GH – 100101

Colour – Mocha



Dimension (mm)	W	D	H
	350	455	115

Functional Features

Design

Pants Racks are design for rotatable, It bring you the fun of picking. Flannelette soft elastic, protection of the beloved clothes, no crease.

Function

The whole push-pull design is more convenient to receive clothes, with the fully concealed silent soft-closing slide, It can be keep the pants rack smooth sliding.

Feature

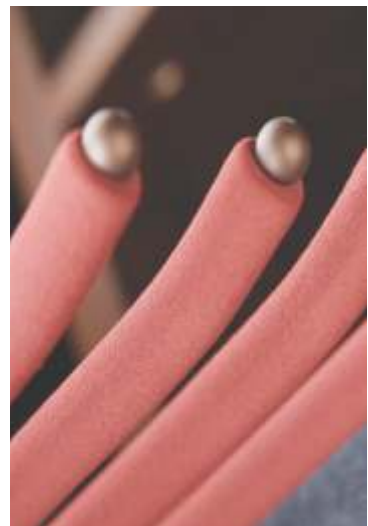
Rigorous geometric shape modelling, showing full personality while giving consideration to elegance, the whole set of collocation for the living space, provides excellent modelling combination.

Material

Optional 3 colour flocking tube, make it more practical and bring some warmth for the furniture.

Installation

Not divided about the installation, not restricted by cabinet, simple and convenient, let us install the product when more follow one's inclinations.



Trouser Rack

Product Name: Trouser Rack

Model No. – GH – 100101

Colour – wood



Dimension (mm)	W	D	H
	350	455	115

Functional Features

Design

Pants Racks are design for rotatable, it bring you the fun of picking. Flannelette soft elastic, protection of the beloved clothes, no crease.

Function

The whole push-pull design is more convenient to receive clothes, with the fully concealed silent soft-closing slide, It can be keep the pants rack smooth sliding.

Feature

Ringorous geometric shape modelling, showing full personality while giving consideration to elegance, the whole set of collocation for the living space, provides excellent modelling combination.

Material

Optional 3 colour flocking tube, make it more practical and bring some warmth for the furniture.

Installation

Not divided about the installation, not restricted by cabinet, simple and convenient, let us install the product when more follow one's inclinations.



Trouser Rack (Leather)



Product Name: Trouser Rack (Leather)

Model No. - GH - 100501

Colour - Blue

Dimension (mm)	W	D	H
	350	446	115

Functional Features

Design

Pants Racks are design for rotatable, it bring you the fun of picking. Flannelette soft elastic, protection of the beloved clothes, no crease.

Function

The whole push-pull design is more convenient to receive clothes, with the fully concealed silent soft-closing slide, It can be keep the pants rack smooth sliding.

Feature

Ringorous geometric shape modelling, showing full personality while giving consideration to elegance, the whole set of collocation for the living space, provides excellent modelling combination.

Material

Optional 3 colour flocking tube, make it more practical and bring some warmth for the furniture.

Installation

Not divided about the installation, not restricted by cabinet, simple and convenient, let us install the product when more follow one's inclinations.



Trouser Rack

Product Name: Double Mounted Rack

Model No. - GH - 1002

Colour - Grey



Dimension (mm)	W	D	H
	630	455	115

Functional Features

Design

Double row Rack design, so worthy of the concept of storage. Flannelette soft elastic, protection of the beloved clothes, no crease.

Function

With the fully concealed silent soft-closing slide, It can be keep the pants rack smooth sliding.

Feature

The overall push-pull design is more convenient to receive clothes, standard with the same color non-slip flocking tube, effectively prevent pants from falling down.

Material

Optional 3 color flocking tube, make it more practical and bring some warmth for the furniture.

Installation

Top Installation, simple and convenient, let us Install the product when more arbitrary.



Trouser Rack

Product Name: Double Mounted Rack

Model No. – GH – 100201

Colour – Mocha



Dimension (mm)	W	D	H
	630	455	115

Functional Features

Design

Double row Rack design, so worthy of the concept of storage. Flannelette soft elastic, protection of the beloved clothes, no crease.

Function

The whole push-pull design is more convenient to receive clothes, with the fully concealed side, it can be rack smooth sliding

Feature

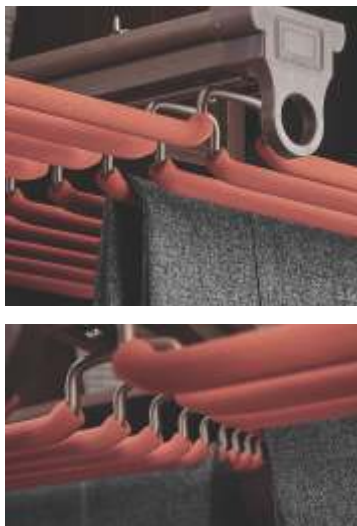
Ringorous geometric shape modelling, showing full personality while giving consideration the whole set of collocation for the living space, provides excellent modelling combination.

Material

Optional 3 colour flocking tube, make it more practical and bring some warmth for the furniture.

Installation

Top Installation, simple and convenient, let us Install the product when more arbitrary.

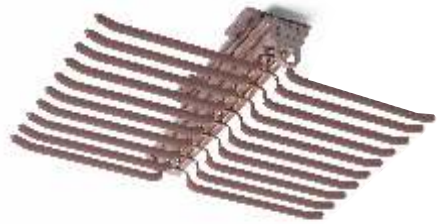


Trouser Rack

Product Name: Double Mounted Rack

Model No. – GH – 100201

Colour – Wood



Dimension (mm)	W	D	H
	630	455	115

Functional Features

Design

Double row Rack design, so worthy of the concept of storage. Flannelette soft elastic, protection of the beloved clothes, no crease.

Function

The whole push-pull design is more convenient to receive clothes, with the fully concealed side, It can be rack smooth sliding

Feature

Ringorous geometric shape modelling, showing full personality while giving consideration the whole set of collocation for the living space, provides excellent modelling combination.

Material

Optional 3 colour flocking tube, make it more practical and bring some warmth for the furniture.

Installation

Top Installation, simple and convenient, let us Install the product when more arbitrary.



Trouser Rack (Leather)

Product Name: Double Mounted Rack (Leather)

Model No. - GH - 100601

Colour - Blue



Dimension (mm)	W	D	H
	630	455	96

Functional Features

Design

Double row Rack design, so worthy of the concept of storage. Flannelette soft elastic, protection of the beloved clothes, no crease.

Function

The whole push-pull design is more convenient to receive clothes, with the fully concealed side, it can be rack smooth sliding

Feature

Ringorous geometric shape modelling, showing full personality while giving consideration the whole set of collocation for the living space, provides excellent modelling combination.

Material

Optional 3 colour flocking tube, make it more practical and bring some warmth for the furniture.

Installation

Top Installation, simple and convenient, let us Install the product when more arbitrary.



Trouser Rack

Product Name: V Shape Rack

Model No. - GH - 1003

Colour - Grey



Dimension (mm)	W	D	H
	340	455	140

Functional Features

Design

Top-mounted Vshaped design make the limited space more diversification. Flannelette soft elastic, protection of the beloved clothes, no crease.

Function

With the fully concealed silent soft-closing slide, It can be keep the pants rack smooth sliding.

Feature

The overall push-pull design is more convenient to put pants.

Material

Optional 3 color flocking tube, make it more practical and bring some warmth for the Furniture.

Installation

Top Installation, simple and convenient, let us Install the product when more arbitrary.



Trouser Rack

Product Name: V Shape Rack

Model No. - GH - 100301

Colour - Mocha



Dimension (mm)	W	D	H
	340	455	140

Functional Features

Design

Double row Rack design so worthy of the concept of storage, flannelette soft elastic, protection of the beloved clothes, no crease.

Function

The whole push-pull design is more convenient to receive clothes, with the fully concealed silent soft-closing slide, it can be keep the pants rack smooth sliding.

Feature

Ringorous geometric shape modelling, showing full personality while giving consideration to allegiance, the whole set of collocation for the living space. provides excellent modelling combination.

Material

Optional 3 colour flocking tube, make it more practical and bring some warmth for the furniture.

Installation

Top Installation, simple and convenient, let us Install the product when more arbitrary.



Trouser Rack

Product Name: V Shape Rack

Model No. - GH - 100301

Colour - Wood



Dimension (mm)	W	D	H
	340	455	140

Functional Features

Design

Double row Rack design so worthy of the concept of storage, flannelette soft elastic, protection of the beloved clothes, no crease.

Function

The whole push-pull design is more convenient to receive clothes, with the fully concealed silent soft-closing slide, It can be keep the pants rack smooth sliding.

Feature

Ringorous geometric shape modelling, showing full personality while giving consideration to allegiance, the whole set of collocation for the living space. provides excellent modelling combination.

Material

Optional 3 colour flocking tube, make it more practical and bring some warmth for the furniture.

Installation

Top Installation, simple and convenient, let us Install the product when more arbitrary.



Trouser Rack (Leather)

Product Name: V Shape Rack (Leather)

Model No. - GH - 100701

Colour - Blue



Dimension (mm)	W	D	H
	340	446	125

Functional Features

Design

Double row Rack design so worthy of the concept of storage, flannelette soft elastic, protection of the beloved clothes, no crease.

Function

The whole push-pull design is more convenient to receive clothes, with the fully concealed silent soft-closing slide, it can be keep the pants rack smooth sliding.

Feature

Ringorous geometric shape modelling, showing full personality while giving consideration to allegiance, the whole set of collocation for the living space. provides excellent modelling combination.

Material

Optional 3 colour flocking tube, make it more practical and bring some warmth for the furniture.

Installation

Top Installation, simple and convenient, let us Install the product when more arbitrary.



Trouser Rack

Product Name: Cloth Holder

Model No. – GH – 1004

Colour – Grey



Dimension (mm)	W	D	H
	115	455	115

Functional features

Design

Different Top-mounted Cloths holder, to create an extraordinary life, Let chest receive more convenient, more reasonable.

Function

With the fully concealed silent soft-closing slide, It can be keep the pants rack smooth sliding.

Feature

The overall push and pull design more convenient to put pants.

Material

Racks in Nano dry plating, keep products In Color coordination, fashion, strong rust resistance make, it more practical and bring some worth for the furniture.

Installation

Top Installation, not restricted by cabinet, simple and convenient, let us in the Installation of products more arbitrary.



Trouser Rack

Product Name: Cloth Holder

Model No. – GH – 100401

Colour – Mocha

Dimension (mm)	W	D	H
	115	455	115

Functional Features

Design

Different Top-mounted Cloths holder, to create an extraordinary life, Let chest receive more convenient, more reasonable.

Function

The whole push-pull design is more convenient to receive clothes, with the fully concealed silent soft-closing slide, It can be keep the pants rack smooth sliding.

Feature

Ringorous geometric shape modelling, showing full personality while giving consideration to elegance, the whole set of collocation for the living space. provides excellent modelling combination.

Material

Racks in Nano dry plating, keep products In Colour coordination, fashion, strong rust resistance make, it more practical and bing some worth for the furniture.

Installation

Top Installation, not restricted by cabinet, simple and convenient, let us in the Installation of products more arbitrary.



Trouser Rack (Leather)

Product Name: Cloth Holder (Leather)

Model No. – GH – 100801

Colour – Blue



Dimension (mm)	W	D	H
	115	455	115

Functional Features

Design

Different Top-mounted Cloths holder, to create an extraordinary life, Let chest receive more convenient, more reasonable.

Function

The whole push-pull design is more convenient to receive clothes, with the fully concealed silent soft-closing slide, It can be keep the pants rack smooth sliding.

Feature

Ringorous geometric shape modelling, showing full personality while giving consideration to elegance, the whole set of collocation for the living space. provides excellent modelling combination.

Material

Racks in Nano dry plating, keep products In Colour coordination, fashion, strong rust resistance make, it more practical and bing some worth for the furniture.

Installation

Top Installation, not restricted by cabinet, simple and convenient, let us in the Installation of products more arbitrary.



Trouser Rack

Product Name: Trouser Rack HiGold

Model No. – GH – 1401A & 1401B

Colour – Golden

Size	1401A		1401B
	600 mm		900 mm
Dimension (mm)	W	D	H
(1401A)	564	460	71
Dimension (mm)	W	D	H
(1401B)	864	460	71

Functional Features

Easy pullout providing clear access to your outfits.

The nonslip PVC lining on removable hangers hold pants/ sarees fabric firmly.

Store trousers/ sarees without creasing them with this innovative pull-out wardrobe rack.

Design for 600 and 900 mm wide cabinets, with soft close feature.



Trouser Rack

Product Name: Trouser Rack Higold

Model No. – GH – 1501A & 1501B

Colour – Grey



Cabinet	1501A	1501B	
	600 mm	900 mm	
Dimension (mm)	W	D	H
(1501A)	564	460	71
Dimension (mm)	W	D	H
(1501B)	864	460	71

Functional Features

Design

Pants racks are adjustable, You can pick out arbitrary. It can be increased the racks with your need, So worthy of the concept of storage.

Function

With the fully concealed silent soft-closing slide, it can be keep the pants rack smooth sliding.

Feature

The width of the frame is adjustable according to the internal wardrobe with adjustable folder 50mm.

Material

Modern fashion appearance of the aluminum frame with a new high-purity aluminum alloy material, can ensure the stability of the product.

Installation

The product is suitable for the standard cabinet, the optimum thickness of the cabinet board is 16-18mm.



Trouser Rack

Product Name: Trouser Rack

Model No. – GH – 1801A & 1801B

Colour – Mocha



Cabinet	1801A		1801B	
	600 mm		900 mm	
Dimension (mm)	W	D	H	
(1801A)	564	465	76	
Dimension (mm)	W	D	H	
(1801B)	864	465	76	

Functional Features

Design

Pants racks are adjustable, You can pick out arbitrary. It can be increased the racks with your need, So worthy of the concept of storage.

Function

With the fully concealed silent soft-closing slide, it can be keep the pants rack smooth sliding.

Feature

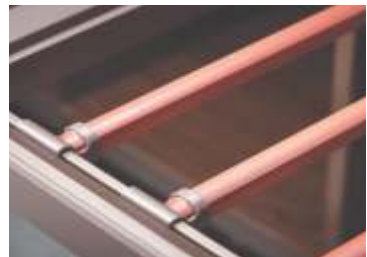
The combination of бага and saddle color brings a whole new definition to the wardrobe environment, The width of the frame is adjustable according to the internal wardrobe with adjustable fol 50mm.

Material

Modern fashion appearance of the aluminum frame with a new high-purity aluminum alloy material, can ensure the stability of the product.

Installation

The product is suitable for the standard cabinet, the optimum thickness of the cabinet board is 16–18mm.



Trouser Rack (Wood)

Product Name: Trouser Rack (Wood)

Model No. – GH – 190101 & 190104

Colour – Wood



Cabinet	190101	190104	
	600 mm	900 mm	
Dimension (mm) (190101)	W	D	H
	564	460	77
Dimension (mm) (190104)	W	D	H
	864	460	77

Functional Features

Design

Pants racks are adjustable, You can pick out arbitrary. It can be increased the racks with your need, So worthy of the concept of storage.

Function

With the fully concealed silent soft-closing slide, it can be keep the pants rack smooth sliding.

Feature

The combination of baga and saddle color brings a whole new defination to the wardrobe enviroment, The width of the frame is adjustable according to the internal wardrobe with adjustable fol 50mm.

Material

Modern fashion appearance of the aluminum frame with a new high-purity aluminum alloy material, can ensure the stability of the product.

Installation

The product is suitable for the standard cabinet, the optimum thickness of the cabinet board is 16-18mm.



Trouser Rack (Leather)

Product Name: Trouser Rack (Leather)

Model No. - GH - 156101 & 156104

Colour - Blue



Cabinet	156101	156104	
	600 mm	900 mm	
Dimension (mm)	W	D	H
(156101)	564	472	59
Dimension (mm)	W	D	H
(156104)	864	472	59

Functional Features

Design

Pants racks are adjustable, You can pick out arbitrary. It can be increased the racks with your need, So worthy of the concept of storage.

Function

With the fully concealed silent soft-closing slide, it can be keep the pants rack smooth sliding.

Feature

The combination of бага and saddle color brings a whole new definition to the wardrobe environment, The width of the frame is adjustable according to the internal wardrobe with adjustable for 50mm.

Material

Modern fashion appearance of the aluminum frame with a new high-purity aluminum alloy material, can ensure the stability of the product.

Installation

The product is suitable for the standard cabinet, the optimum thickness of the cabinet board is 16-18mm.







Rattan Basket



Rattan Basket

Product Name: Rattan Basket HiGold

Model No. – GH – 1403A & 1403B

Colour – Golden GC



Cabinet	1403A	1403B	
	600 mm	900 mm	
Dimension (mm) (1403A)	W	D	H
	564	460	71
Dimension (mm) (1403B)	W	D	H
	864	460	71

Functional Features

Well – designed plastic wicker basket with soft close feature is ideal for organised storage in wardrobes.

Easy pull out providing clear access to your outfits.

Designed for 600 & 900mm wide cabinets.



Rattan Basket

Product Name: Rattan Basket

Model No. – GH – 1502A & 1502B

Colour – Grey



Cabinet	1502A		1502B	
	600 mm		900 mm	
Dimension (mm)	W	D	H	
(1502A)	564	460	170	
Dimension (mm)	W	D	H	
(1502B)	864	460	170	

Functional Features

Design

PE rattan-like material has a good flame retardant effect, good toughness, not stagnant water and have a certain pest control effect.

Function

With the fully concealed silent soft-closing slide, it can be keep the pants rack smooth sliding.

Feature

The width of the frame is adjustable according to the Internal wardrobe with- adjustable fol 50mm.

Material

Modern fashion appearance of the aluminum frame with a new high-purity aluminum alloy material, can ensure the stability of the product.

Installation

The product is suitable for the standard cabinet, the optimum thickness of the cabinet board is 16-18mm.



Rattan Basket

Product Name: Rattan Basket

Model No. – GH – 1802A & 1802B

Colour – Mocha



Cabinet	1802A	1802B	
	600 mm	900 mm	
Dimension (mm)	W	D	H
(1802A)	564	460	170
Dimension (mm)	W	D	H
(1802B)	864	460	170

Functional Features

Design

PE rattan-like material has a good flame retardant effect, good toughness, not stagnant water and have a certain pest control effect.

Function

With the fully concealed silent soft-closing slide, it can be kept the pants rack smooth sliding.

Feature

The width of the frame is adjustable according to the internal wardrobe with- adjustable for 50mm.

Material

Modern fashion appearance of the aluminum frame with a new high-purity aluminum alloy material, can ensure the stability of the product.

Installation

The product is suitable for the standard cabinet, the optimum thickness of the cabinet board is 16-18mm.





Hangar Lifter



Hanger Lifter (HiGold)

Product Name: Hanger Lifter (HiGold)

Model No. – GH – 1205

Colour – Golden

Dimension (mm)	W	D	H
(1205)	830	-	1150

Functional Features

It enables the wardrobe interior to be used in a new way, hanging suits and dresses at the top.

Particularly suited to interiors from 750 mm to 1150 mm wide.

It can be lowered, locked in position to load or unload clothing, before returning easily into the wardrobe silently.

The lift is returned to the top position by a hydraulic device operated with a specially designed fluid and is fixed directly into the "System 32" hole with fastening screws provided in the pack. It has specially shaped base to avoid door hinges. Load Capacity 15kgs.



Hanger Lifter

Product Name: Hanger Lifter

Model No. – GH – 1205A & 1205B

Colour – Black



Cabinet	1205A		1205B	
	600 mm		900 mm	
Dimension (mm) (1205A)	W	D	H	
	600	-	830	
Dimension (mm) (1205B)	W	D	H	
	830	-	1150	

Functional Features

Design

Hydraulic design, easy to pull down, smooth and smooth rise. Give you a comfortable home experience, high ark essential god assistant.

Function

Double buffer hydraulic, stronger, long service life, easy to pull down, within reach, streamlined frosted handle, hold hands

Feature

The bar is designed to be retractable. It has three sizes and fits the wardrobe of different widths and specifications.

Material

The product is made of high purity aluminum alloy material, which ensures the toughness and stability of the material, and is fashionable in appearance.

Installation

It is suitable for installing the top of the 2.4M with cabinet and making full use of the space of the cabinet. The product is suitable for the standard cabinet, the optimum thickness of the cabinet board is 16-18 mm



Hanger Lifter

Product Name: Hanger Lifter

Model No. – GH – 120503

Colour – Mocha



Dimension (mm)	W	D	H
(120503)	830	-	1150

Functional Features

Design

Hydraulic design, easy to pull down, smooth and smooth rise. Give you a comfortable home experience, high ark essential god assistant.

Function

Double buffer hydraulic, stronger, long service life, easy to pull down, within reach, streamlined frosted handle, hold hands

Feature

The bar is designed to be retractable. It has three sizes and fits the wardrobe of different widths and specifications.

Material

The product is made of high purity aluminum alloy material, which ensures the toughness and stability of the material, and is fashionable in appearance.

Installation

It is suitable for installing the top of the 2.4M hith cabinet and making full use of the space of the cabinet. The product is suitable for the standard cabinet, the optimum thickness of the cabinet board is 16-18mm 20





Shoe Rack



Shoe Rack

Product Name: Shoe Rack 6 Layers & 12 Layers

Model No. – GH – 1208

Colour – Grey

Dimension (mm)	W	D	H
(6 Layers)	700	360	955-1200
Dimension (mm)	W	D	H
(12 Layers)	700	360	1910-2100

Functional Features

Design

360 degrees revolving; Split-layer design can hold twice as many shoes; Maximize the use of space, choose shoes follow one's inclination.

Function

Cabinet height is no longer limited, no need to change cabinet can be installed. Double-sided convenient rotation pull out, easy rotation; Below the circumstance that ark height allows, adjust coping height to grow, can put down winter boot.

Feature

Large storage capacity, Each layer can be placed more than 3 pairs of shoe rack. The highly of the frame is adjustable according to the internal wardrobe with-adjustable fol 200mm.

Material

Modern fashion appearance of the aluminum frame with a new high- purity aluminum alloy material, can ensure the stability of the product.

Installation

The product is suitable for the standard cabinet, the optimum thickness of the cabinet board is 16-18mm.



Shoe Rack

Product Name: Shoe Rack 6 Layer & 12 Layers

Model No. – GH – 120805

Colour – Mocha

Dimension (mm)	W	D	H
(6 Layers)	700	360	1910-2210
Dimension (mm)	W	D	H
(12 Layers)	700	360	1910-2100

Functional Features

Design

360 degrees revolving; Split-layer design can hold twice as many shoes; Maximize the use of space, choose shoes follow one's inclination.

Function

Cabinet height is no longer limited, no need to change cabinet can be installed. Double-sided convenient rotation pull out, easy rotation; Below the circumstance that ark height allows, adjust coping height to grow, can put down winter boot.

Feature

Large storage capacity, Each layer can be placed more than 3 pairs of shoe rack. The highly of the frame is adjustable according to the Internal wardrobe with-adjustable fol 200mm.

Material

Modern fashion appearance of the aluminum frame with a new high-purity aluminum alloy material, can ensure the stability of the product.

Installation

The product is suitable for the standard cabinet, the optimum thickness of the cabinet board is 16-18mm.



Shoe Rack

Product Name: Shoe Rack 12 Layers

Model No. – GH – 120805

Colour – Wood

Dimension (mm)	W	D	H
(12 Layers)	700	360	1910-2100

Functional Features

Design

360 degrees revolving; Split-layer design can hold twice as many shoes; Maximize the use of space, choose shoes follow one's inclination.

Function

Cabinet height is no longer limited, no need to change cabinet can be installed. Double-sided convenient rotation pull out, easy rotation; Below the circumstance that ark height allows, adjust coping height to grow, can put down winter boot.

Feature

Large storage capacity, Each layer can be placed more than 3 pairs of shoe rack. The highly of the frame is adjustable according to the Internal wardrobe with-adjustable fol 200mm.

Material

Modern fashion appearance of the aluminum frame with a new high-purity aluminum alloy material, can ensure the stability of the product.

Installation

The product is suitable for the standard cabinet, the optimum thickness of the cabinet board is 16-18mm.





Shoe Rack

Product Name: Shoe Rack HiGold

Model No. – GH – 1405A & 1405B

Colour – Golden

Cabinet	1405A	1405B	
	600 mm	900 mm	
Dimension (mm)	W	D	H
(1405A)	564	460	71
Dimension (mm)	W	D	H
(1405B)	864	460	71

Functional Features

Organise your foot wears in a better way with these pull-out shoe racks.

Ready to use product that can be installed easily in any type of wardrobe.

Easy pullout ensures clear overview of stored item.

In-built soft closing ensures effortless functioning.

Designed for 600 & 900mm wide cabinets



Shoe Rack

Product Name: Shoe Rack

Model No. – GH – 1505A & 1505B

Colour – Grey



Cabinet	1505A	1505B	
	600 mm	900 mm	
Dimension (mm)	W	D	H
(1505A)	564	460	170
Dimension (mm)	W	D	H
(1505B)	864	460	170

Functional Features

Design

The elegant shoe rack features a high-grade nano-spraying process, offering a sleek and simple aesthetic without compromising on sophistication. Its Graphite Grey color adds a modern touch to any space.

Function

Equipped with fully concealed silent soft-closing slides, the shoe rack ensures smooth and quiet operation, making it easy to organize and access your footwear.

Feature

The width of the frame is adjustable in 50 mm increments, allowing for customization to fit the internal dimensions of different wardrobes. Designed to fit 600 mm and 900 mm wide cabinets, it offers flexibility and convenience.

Material

The shoe rack boasts a contemporary appearance with its Graphite Grey aluminum frame. Made from high-purity aluminum alloy, it ensures the product's stability and durability.

Installation

This shoe rack is designed to fit standard cabinets, with an optimal cabinet board thickness of 16-18 mm for easy installation.



Shoe Rack

Product Name: Shoe Rack

Model No. – GH – 1805A & 1805B

Colour – Mocha

Cabinet	1805A	1805B	
	600 mm	900 mm	
Dimension (mm)	W	D	H
(1805A)	564	465	175
Dimension (mm)	W	D	H
(1805B)	864	465	175

Functional Features

Design

The elegant shoe rack features a high-grade nano-spraying process, offering a sleek and simple aesthetic without compromising on sophistication. Its Mocha color adds a modern touch to any space.

Function

Equipped with fully concealed silent soft-closing slides, the shoe rack ensures smooth and quiet operation, making it easy to organize and access your footwear.

Feature

The width of the frame is adjustable in 50 mm increments, allowing for customization to fit the internal dimensions of different wardrobes. Designed to fit 600 mm and 900 mm wide cabinets, it offers flexibility and convenience.

Material

The shoe rack boasts a contemporary appearance with its Mocha aluminum frame. Made from high-purity aluminum alloy, it ensures the product's stability and durability.

Installation

This shoe rack is designed to fit standard cabinets, with an optimal cabinet board thickness of 16-18 mm for easy installation.



Shoe Rack

Product Name: Shoe Rack

Model No. - GH - 190601 & 190604

Colour - Wood



Cabinet	190601		190604	
	600 mm		900 mm	
Dimension (mm) (190601)	W	D	H	
	564	460	175	
Dimension (mm) (190604)	W	D	H	
	864	460	175	

Functional Features

Design

The elegant shoe rack features a high-grade nano-spraying process, offering a sleek and simple aesthetic without compromising on sophistication. Its wooden color adds a modern touch to any space.

Function

Equipped with fully concealed silent soft-closing slides, the shoe rack ensures smooth and quiet operation, making it easy to organize and access your footwear.

Feature

The width of the frame is adjustable in 50 mm increments, allowing for customization to fit the internal dimensions of different wardrobes. Designed to fit 600 mm and 900 mm wide cabinets, it offers flexibility and convenience.

Material

The shoe rack boasts a contemporary appearance with its wooden frame. Made from high-purity Solid wood, it ensures the product's stability and durability.

Installation

This shoe rack is designed to fit standard cabinets, with an optimal cabinet board thickness of 16-18 mm for easy installation.



Shoe Rack (Leather)

Product Name: Shoe Rack (Leather)

Model No. – GH – 156601 & 156604

Colour – Blue



Cabinet	156601	156604	
	600 mm	900 mm	
Dimension (mm)	W	D	H
(156601)	564	472	197
Dimension (mm)	W	D	H
(156604)	864	472	197

Functional Features

Design

The elegant shoe rack features a high-grade nano-spraying process, offering a sleek and simple aesthetic without compromising on sophistication. Its Blue leather frame adds a modern touch to any space.

Function

Equipped with fully concealed silent soft-closing slides, the shoe rack ensures smooth and quiet operation, making it easy to organize and access your footwear.

Feature

The width of the frame is adjustable in 50 mm increments, allowing for customization to fit the internal dimensions of different wardrobes. Designed to fit 600 mm and 900 mm wide cabinets, it offers flexibility and convenience.

Material

The shoe rack boasts a contemporary appearance with its Blue leather frame. Made from high-quality leather, it ensures the product's stability and durability.

Installation

This shoe rack is designed to fit standard cabinets, with an optimal cabinet board thickness of 16-18 mm for easy installation.





Corner Rotating Basket



Corner Rotating Basket

Product Name: Corner Rotating Basket

Model No. – GH – 1209-1

Colour – Grey

Dimension (mm)	W	D	H
	700	360	900-2100

Functional Features

Design

Solve corner space for you to use the problem, make full use of corner space, make full use of things; No Intermediate partition, easy to take, at a glance

Function

Each layer of built-in bearing device, unique, easy and smooth rotation 360°, The upper and lower layers rotate independently. The corner space that made the greatest use of chest.

Feature

The height can be adjusted for 200mm, A cabinet suitable for 1900-2100mm height.

Material

The trousers are wrapped with anti skid tube, and the trousers are suspended for a long time without printing, and they are not easy to slide.

Installation

The product is suitable for the standard cabinet, the optimum thickness of the cabinet board is 16-18mm.



Corner Rotating Basket

Product Name: Corner Rotating Basket

Model No. – GH – 1209–3

Colour – Grey

Dimension (mm)	W	D	H
	700	360	900-2100

Functional Features

Design

Solve corner space for you to use the problem, make full use of corner space, make full use of things; No Intermediate partition, easy to take, at a glance.

Function

Each layer of built-in bearing device, unique, easy and smooth rotation 360°, The upper and lower layers rotate Independently. The corner space that made the greatest use of chest.

Feature

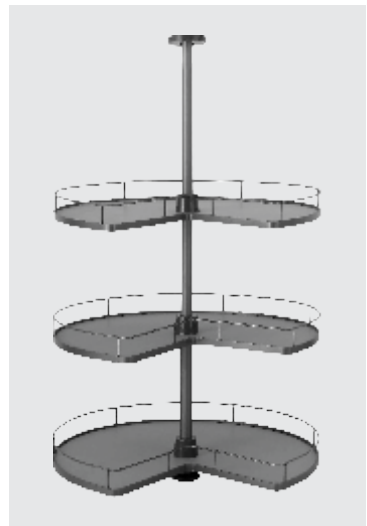
The height can be adjusted for 200mm, A cabinet suitable for 1900-2100mm height.

Material

The main body adopts nano dry planting process, with strong anti-rust ability, multi-layer design and powerful storage function.

Installation

The product is suitable for the standard cabinet, the optimum thickness of the cabinet board is 16-18mm.







Decoration Basket



Decoration Basket (Leather)

Product Name: Decoration Basket (Leather)

Model No. – GH – 1517A & 1517B

Colour – Grey



Cabinet	1517A	1517B	
	600 mm	900 mm	
Dimension (mm)	W	D	H
(1517A)	564	460	170
Dimension (mm)	W	D	H
(1517B)	864	460	170

Functional Features

Design

High grade grey and Milan orange match perfectly. Inside quality, outside appearance level, let your wardrobe all the more brilliant, add vitality for furniture.

Function

With the fully concealed silent soft-closing slide, it can be keep the pants rack smooth sliding.

Feature

The frame is made of high-end leather, which can protect clothes more effectively and make daily care very convenient. The width of the frame is adjustable according to the internal wardrobe with-adjustable upto 50mm.

Material

Modern fashion appearance of the aluminum frame with a new high-purity aluminum alloy material, can ensure the stability of the product.

Installation

The product is suitable for the standard cabinet, the optimum thickness of the cabinet board is 16-18mm.



Decoration Basket (Leather)

Product Name: Decoration Basket (Leather)

Model No. – GH – 1817A & 1817B

Colour – Mocha



Cabinet	1817A		1817B	
	600 mm		900 mm	
Dimension (mm)	W	D	H	
(1817A)	564	460	170	
Dimension (mm)	W	D	H	
(1817B)	864	460	170	

Functional Features

Design

This product combines the style of simplicity, originality, with saddie color leather, elegant thread sewing, to ensure the materials and technology, while giving the product a distinctive personality.

Function

With the fully concealed silent soft-closing slide, it can be keep the pants rack smooth sliding.

Feature

The frame is made of high-end leather, which can protect clothes more effectively and make daily care very convenient. The width of the frame is adjustable according to the internal wardrobe with-adjustable upto 50 mm.

Material

Modern fashion appearance of the aluminum frame with a new high-purity aluminum alloy material, can ensure the stability of the product.

Installation

The product is suitable for the standard cabinet, the optimum thickness of the cabinet board is 16-18 mm.



Decoration Basket (Glass)

Product Name: Decoration Basket (Glass)

Model No. – GH – 1519A & 1519B

Colour – Grey



Cabinet	1519A	1519B	
	600 mm	900 mm	
Dimension (mm)	W	D	H
(1519A)	564	460	170
Dimension (mm)	W	D	H
(1519B)	864	460	170

Functional Features

Design

High-grade toughened glass is framed by a combination of sleek edges and a Graphite Grey aluminium frame, merging aesthetic appeal with practical strength. This refined design elevates the look of any wardrobe while maximizing storage space.

Function

Equipped with fully concealed silent soft-closing slides, the decorative basket ensures smooth and quiet operation. The width of the frame is adjustable in 50 mm increments, allowing for customization to fit the internal dimensions of different wardrobes.

Feature

The graphite grey metal frame, combined with a black walnut finish, offers a distinctive look. The high-quality toughened glass adds a touch of elegance, making the basket's style versatile and sophisticated.

Material

The decorative basket features a modern, stylish appearance with its Graphite Grey aluminium frame. Made from high-purity aluminum alloy, it ensures the product's stability and durability.

Installation

This basket is designed to fit standard cabinets, with an optimal cabinet board thickness of 16-18 mm for easy installation. It is suitable for 600 mm and 900 mm wide cabinets, providing flexibility and convenience in organizing your clothes.



Decoration Basket (Glass)

Product Name: Decoration Basket (Glass)

Model No. – GH – 1819A & 1819B

Colour – Mocha



Cabinet	1819A	1819B	
	600 mm	900 mm	
Dimension (mm)	W	D	H
(1819A)	564	460	170
Dimension (mm)	W	D	H
(1819B)	864	460	170

Functional Features

Design

High-grade toughened glass is framed by a combination of sleek edges and a Mocha aluminium frame, merging aesthetic appeal with practical strength. This refined design elevates the look of any wardrobe while maximizing storage space.

Function

Equipped with fully concealed silent soft-closing slides, the decorative basket ensures smooth and quiet operation. The width of the frame is adjustable in 50 mm increments, allowing for customization to fit the internal dimensions of different wardrobes.

Feature

The graphite grey metal frame, combined with a black walnut finish, offers a distinctive look. The high-quality toughened glass adds a touch of elegance, making the basket's style versatile and sophisticated.

Material

The decorative basket features a modern, stylish appearance with its Mocha aluminium frame. Made from high-purity aluminum alloy, it ensures the product's stability and durability.

Installation

This basket is designed to fit standard cabinets, with an optimal cabinet board thickness of 16–18 mm for easy installation. It is suitable for 600 mm and 900 mm wide cabinets, providing flexibility and convenience in organizing your clothes.



Decoration Basket (Wood)

Product Name: Decoration Basket (Wood)

Model No. – GH – 1919B01 & 1919B04

Colour – Wood



Cabinet	1919B01	1919B04	
	600 mm	900 mm	
Dimension (mm)	W	D	H
(1919B01)	564	460	175
Dimension (mm)	W	D	H
(1919B04)	864	460	175

Functional Features

Design

High-grade toughened glass is framed by a combination of sleek edges and a Mocha aluminium frame, merging aesthetic appeal with practical strength. This refined design elevates the look of any wardrobe while maximizing storage space.

Function

Equipped with fully concealed silent soft-closing slides, the decorative basket ensures smooth and quiet operation. The width of the frame is adjustable in 50 mm increments, allowing for customization to fit the internal dimensions of different wardrobes.

Feature

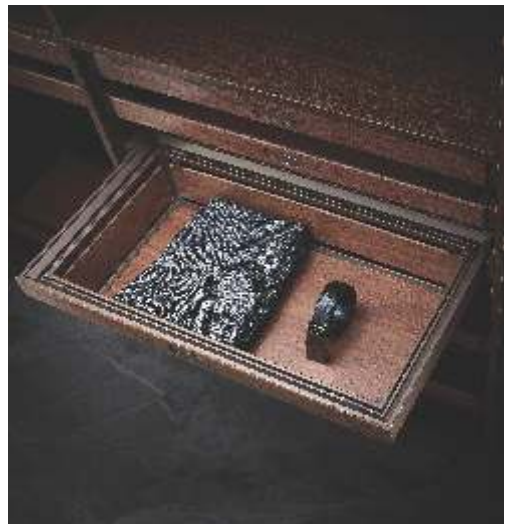
The graphite grey metal frame, combined with a black walnut finish, offers a distinctive look. The high-quality toughened glass adds a touch of elegance, making the basket's style versatile and sophisticated.

Material

The decorative basket features a modern, stylish appearance with its Mocha aluminium frame. Made from high-purity aluminum alloy, it ensures the product's stability and durability.

Installation

This basket is designed to fit standard cabinets, with an optimal cabinet board thickness of 16-18 mm for easy installation. It is suitable for 600 mm and 900 mm wide cabinets, providing flexibility and convenience in organizing your clothes.



Decoration Basket (Leather)

Product Name: Decoration Basket (Leather)

Model No. – GH – 156301 & 156304

Colour – Blue



Cabinet	156301	156304	
	600 mm	900 mm	
Dimension (mm)	W	D	H
(156301)	564	472	216
Dimension (mm)	W	D	H
(156301)	864	472	216

Functional Features

Design

High-grade toughened glass is framed by a combination of sleek edges and a Blue Leather frame, merging aesthetic appeal with practical strength. This refined design elevates the look of any wardrobe while maximizing storage space.

Function

Equipped with fully concealed silent soft-closing slides, the decorative basket ensures smooth and quiet operation. The width of the frame is adjustable in 50 mm increments, allowing for customization to fit the internal dimensions of different wardrobes.

Feature

The graphite grey metal frame, combined with a black walnut finish, offers a distinctive look. The high-quality toughened glass adds a touch of elegance, making the basket's style versatile and sophisticated.

Material

The decorative basket features a modern, stylish appearance with its Blue Leather frame. Made from high-purity aluminum alloy, it ensures the product's stability and durability.

Installation

This basket is designed to fit standard cabinets, with an optimal cabinet board thickness of 16–18 mm for easy installation. It is suitable for 600 mm and 900 mm wide cabinets, providing flexibility and convenience in organizing your clothes.







Decoration Shelf



Decoration Shelf (Leather)

Product Name: Decoration Shelf (Leather)

Model No. – GH – 1406A & 1406B

Colour – Golden



Cabinet	1406A	1406B	
	600 mm	900 mm	
Dimension (mm) (1406A)	W	D	H
	564	460	71
Dimension (mm) (1406B)	W	D	H
	764	460	71

Functional Features

Organize drawers as desired with flexible drawer partitions.

It can be easily positioned on the side or in the middle of drawer with any combination of your choice.

Ideal for storing multiple items such as jewellery, watches, other accessories etc. (For Wardrobe).



Decoration Shelf (Leather)

Product Name: Decoration Shelf (Leather)

Model No. – GH – 1516A & 1520B

Colour – Grey



Cabinet	1516A		1520B	
	600 mm		900 mm	
Dimension (mm)	W	D	H	
(1516A)	564	460	71	
Dimension (mm)	W	D	H	
(1520B)	864	460	71	

Design

Crafted from high-grade leather with a Graphite Grey frame, this exquisite decoration shelf boasts a meticulous production process and luxurious feel, adding warmth to any living space. Its versatile design complements various styles of clothing and accessories.

Function

Equipped with fully concealed silent soft-closing slides, the shelf ensures smooth and effortless access, making it ideal for storing jewelry, watches, and other accessories.

Feature

The frame width is adjustable in 50 mm increments, allowing for customization to fit the internal dimensions of different wardrobes.

Material

The shelf features a modern, stylish appearance with its Graphite Grey aluminum frame, made from high-purity aluminum alloy, ensuring product stability and durability.

Installation

This shelf is designed to fit standard cabinets, with an optimal cabinet board thickness of 16-18 mm for easy installation.



Decoration Shelf (Leather)

Product Name: Leather Decoration Shelf (Leather)

Model No. – GH – 1820A

Colour – Mocha

Cabinet	1820A	1820B	
	600 mm	900 mm	
Dimension (mm)	W	D	H
(1820A)	564	460	71
Dimension (mm)	W	D	H
(1820B)	864	460	71



Design

Crafted from high-grade leather with a Mocha frame, this exquisite decoration shelf boasts a meticulous production process and luxurious feel, adding warmth to any living space. Its versatile design complements various styles of clothing and accessories.

Function

Equipped with fully concealed silent soft-closing slides, the shelf ensures smooth and effortless access, making it ideal for storing jewelry, watches, and other accessories.

Feature

The frame width is adjustable in 50 mm increments, allowing for customization to fit the internal dimensions of different wardrobes.

Material

The shelf features a modern, stylish appearance with its Mocha aluminum frame, made from high-purity aluminum alloy, ensuring product stability and durability.

Installation

This shelf is designed to fit standard cabinets, with an optimal cabinet board thickness of 16-18 mm for easy installation.



Decoration Shelf (Leather)

Product Name: Decoration Shelf (Leather)

Model No. – GH – 156201 & 156204

Colour – Blue



Cabinet	156201	156204	
	600 mm	900 mm	
Dimension (mm)	W	D	H
(156201)	564	472	73
Dimension (mm)	W	D	H
(156204)	864	472	73

Functional Features

Design

Crafted from premium leather, this piece exudes sophistication and elegance, creating a composed and luxurious atmosphere.

Function

Equipped with a fully concealed, silent, soft-closing slide, it ensures smooth and effortless operation.

Feature

The in-built soft-closing mechanism provides effortless functionality. Designed for 600mm and 900mm wide cabinets, it is ideal for storing various types of jewelry, including necklaces, rings, and earrings.

Material

The modern, fashionable appearance is enhanced by high-quality leather, ensuring durability and a refined look.

Installation

Suitable for standard cabinets, the product is optimized for cabinet boards with a thickness of 16–18mm.



Decoration Shelf With (Leather)

Product Name: Decoration Shelf (Leather)

Model No. – GH – 156401 & 156404

Colour – Blue



Cabinet	156401	156404	
	600 mm	900 mm	
Dimension (mm)	W	D	H
(156401)	564	472	105
Dimension (mm)	W	D	H
(156404)	864	472	105

Functional Features

Design

Composed atmosphere high grade ash and natural environmental protection black walnut perfect match, low-key calm and yi Yiis bright.

Function

With the fully concealed silent soft-closing slide, it can be keep the pants rack smooth sliding.

Feature

In-built soft closing ensures effortless functioning. Designed for 600 & 900mm wide cabinets. Ideal for storing variety of jewellery such as necklaces, rings, earrings or more.

Material

Modern fashion appearance of the aluminum frame with a new high-purity aluminum alloy material, can ensure the stability of the product.

Installation

The product is suitable for the standard cabinet, the optimum thickness of the cabinet board is 16- 18mm



Decoration Shelf (Leather)

Product Name: Decoration Shelf with cover (Leather)

Model No. – GH – 156501 & 156504

Colour – Blue



Cabinet	156501	156504	
	600 mm	900 mm	
Dimension (mm) (156501)	W	D	H
	564	472	105
Dimension (mm) (156504)	W	D	H
	864	472	105

Functional Features

Design

Crafted from high-quality leather, this piece exudes sophistication and durability, creating a composed and elegant atmosphere.

Function

Equipped with a fully concealed, silent, soft-closing slide, it ensures smooth and effortless sliding.

Feature

The in-built soft-closing mechanism enhances functionality. Designed for 600mm and 900mm wide cabinets, it is perfect for storing undergarments, ties, belts, and handkerchiefs.

Material

The modern, fashionable appearance is enhanced by premium leather, ensuring both durability and a luxurious feel.

Installation

Suitable for standard cabinets, the product is optimized for cabinet boards with a thickness of 16-18mm.



Decoration Shelf With Make-Up Box (Leather)

Product Name: Decoration Shelf With Make-Up Box (Leather)

Model No. – GH – 156701 & 156704

Colour – Blue



Cabinet	156701	156704	
	600 mm	900 mm	
Dimension (mm) (156701)	W	D	H
	564	472	73
Dimension (mm) (156704)	W	D	H
	864	472	73

Functional Features

Design

Crafted from high-quality leather, this organizer exudes sophistication and durability, creating a composed and elegant atmosphere.

Function

Equipped with a fully concealed, silent, soft-closing slide, it ensures smooth sliding for effortless access to your makeup and cosmetics.

Feature

The in-built soft-closing mechanism provides seamless functionality. Designed for 600mm and 900mm wide cabinets, it is ideal for storing a variety of makeup and cosmetics such as brushes, palettes, and skincare products.

Material

The modern, fashionable appearance is enhanced by premium leather, ensuring both durability and a luxurious feel.

Installation

Suitable for standard cabinets, the product is optimized for cabinet boards with a thickness of 16–18mm.



Decoration Shelf (Velvet)

Product Name: Decoration Shelf (Velvet)

Model No. – GH – 1507A & 1507B

Colour – Grey



Cabinet	1507A		1507B	
	900 mm		900 mm	
Dimension (mm)	W	D	H	
(1507A)	564	460	71	
Dimension (mm)	W	D	H	
(1507B)	864	460	71	

Functional Features

Design

Crafted from luxurious velvet, this piece offers a sophisticated and elegant touch, creating a composed and opulent atmosphere.

Function

Equipped with a fully concealed, silent, soft-closing slide, it ensures smooth and quiet operation.

Feature

The in-built soft-closing mechanism provides effortless functionality. Designed for 600mm and 900mm wide cabinets, it is ideal for storing various types of jewelry such as necklaces, rings, and earrings.

Material

The modern, fashionable appearance is enhanced by premium velvet, ensuring both durability and a plush, luxurious feel.

Installation

Suitable for standard cabinets, the product is optimized for cabinet boards with a thickness of 16–18mm.



Decoration Shelf (Velvet)

Product Name: Decoration Shelf (Velvet)

Model No. – GH – 1807A & 1807B

Colour – Mocha



Cabinet	1807A	1807B	
	600 mm	900 mm	
Dimension (mm) (1807A)	W	D	H
	564	460	71
Dimension (mm) (1807B)	W	D	H
	864	460	71

Functional Features

Design

Natural flocking decorative natural area aesthetic feeling, and Mocha temperament casual revel. Create a sense of luxury and elegance.

Function

With the fully concealed silent soft-closing slide, it can be keep the pants rack smooth sliding.

Feature

The combination of бага and saddle color brings a whole new definition to the wardrobe environment, The width of the frame is adjustable according to the internal wardrobe with-adjustable for 50mm.

Material

Modern fashion appearance of the aluminum frame with a new high-purity aluminum alloy material, can ensure the stability of the product.

Installation

The product is suitable for the standard cabinet, the optimum thickness of the cabinet board is 16- 18mm.



Decoration Shelf

Product Name: Decoration Shelf

Model No. – GH – 1506A & 1506B

Colour – Grey

Cabinet	1506A		1506B	
	600 mm		900 mm	
Dimension (mm)	W	D	H	
(1506A)	564	460	71	
Dimension (mm)	W	D	H	
(1506B)	864	460	83	

Functional Features

Design

Crafted from premium aluminium, this piece exudes sophistication and elegance, creating a composed and luxurious atmosphere.

Function

Equipped with a fully concealed, silent, soft-closing slide, it ensures smooth and effortless operation.

Feature

The in-built soft-closing mechanism provides effortless functionality. Designed for 600mm and 900mm wide cabinets, it is ideal for storing various types of jewelry, including necklaces, rings, and earrings.

Material

The modern, fashionable appearance is enhanced by high-quality aluminium, ensuring durability and a refined look.

Installation

Suitable for standard cabinets, the product is optimized for cabinet boards with a thickness of 16–18mm.



Decoration Shelf (Wood)

Product Name: Decoration Shelf (Wood)

Model No. – GH – 1820-A & 1820-B

Colour – Mocha



Cabinet	1820A	1820B	
	600 mm	900 mm	
Dimension (mm)	W	D	H
(1820A)	564	460	71
Dimension (mm)	W	D	H
(1820B)	864	460	71

Functional Features

Design

Crafted from premium wood, this piece exudes sophistication and elegance, creating a composed and luxurious atmosphere.

Function

Equipped with a fully concealed, silent, soft-closing slide, it ensures smooth and effortless operation.

Feature

The in-built soft-closing mechanism provides effortless functionality. Designed for 600mm and 900mm wide cabinets, it is ideal for storing various types of jewelry, including necklaces, rings, and earrings.

Material

The modern, fashionable appearance is enhanced by high-quality wood, ensuring durability and a refined look.

Installation

Suitable for standard cabinets, the product is optimized for cabinet boards with a thickness of 16-18mm.



Decoration Shelf (Wood)

Product Name: Decoration Shelf (Wood)

Model No. – GH – 1920B01 & 1920B04

Colour – Wood



Cabinet	1920B01	1920B04	
	600 mm	900 mm	
Dimension (mm)	W	D	H
(1920B01)	564	460	77
Dimension (mm)	W	D	H
(1920B04)	864	460	77

Functional Features

Design

Crafted from premium aluminium mocha colour, this piece exudes sophistication and elegance, creating a composed and luxurious atmosphere.

Function

Equipped with a fully concealed, silent, soft-closing slide, it ensures smooth and effortless operation.

Feature

The in-built soft-closing mechanism provides effortless functionality. Designed for 600mm and 900mm wide cabinets, it is ideal for storing various types of jewelry, including necklaces, rings, and earrings.

Material

The modern, fashionable appearance is enhanced by high-quality aluminium mocha colour, ensuring durability and a refined look.

Installation

Suitable for standard cabinets, the product is optimized for cabinet boards with a thickness of 16-18mm.







Looking Mirror For Wardrobe



Looking Mirror For Wardrobe

Product Name: Revolving Mirror

Model No. – GH – 1602

Colour – Steel Grey

Dimension (mm)	W	D	H
(1602)	350	-	1200

Functional Features

Design

The mirror frame is made of Premium Aluminium material, which offers excellent flame retardancy, durability, and resistance to water and pests.

Function

Easy to operate and rotate, the mirror allows for convenient viewing angles without needing to adjust its position. It seamlessly fits into any wardrobe style, enhancing the wardrobe's functionality.

Feature

The mirror's slim design ensures it takes up minimal space, equivalent to a single piece of clothing.

Material

Constructed from high-purity aluminum alloy, the mirror is both tough and stable, with a fashionable appearance.

Installation

The mirror can be installed on either side of the wardrobe, allowing for flexible and personalized placement.



Looking Mirror For Wardrobe

Product Name: Revolving Mirror

Model No. – GH – 160702

Colour – Mocha

Dimension (mm)	W	D	H
(1602)	350	-	1200

Functional Features

Design

The mirror frame is made of Premium Aluminium material, which offers excellent flame retardancy, durability, and resistance to water and pests.

Function

Easy to operate and rotate, the mirror allows for convenient viewing angles without needing to adjust its position. It seamlessly fits into any wardrobe style, enhancing the wardrobe's functionality.

Feature

The mirror's slim design ensures it takes up minimal space, equivalent to a single piece of clothing.

Material

Constructed from high-purity aluminum alloy, the mirror is both tough and stable, with a fashionable appearance.

Installation

The mirror can be installed on either side of the wardrobe, allowing for flexible and personalized placement.



Tie Rack

Product Name: Tie Rack

Model No. – GH – 131001

Colour – Mocha

Dimension (mm)	W	D	H
(131001)	350	-	1200

Functional Features

Design

The tie rack is crafted from high-quality PVC material, offering excellent flame retardancy, durability, and resistance to water and pests.

Function

Easy to operate and rotate, the tie rack allows for convenient access to ties without needing to adjust its position. It seamlessly integrates into any wardrobe style, enhancing the wardrobe's organization.

Feature

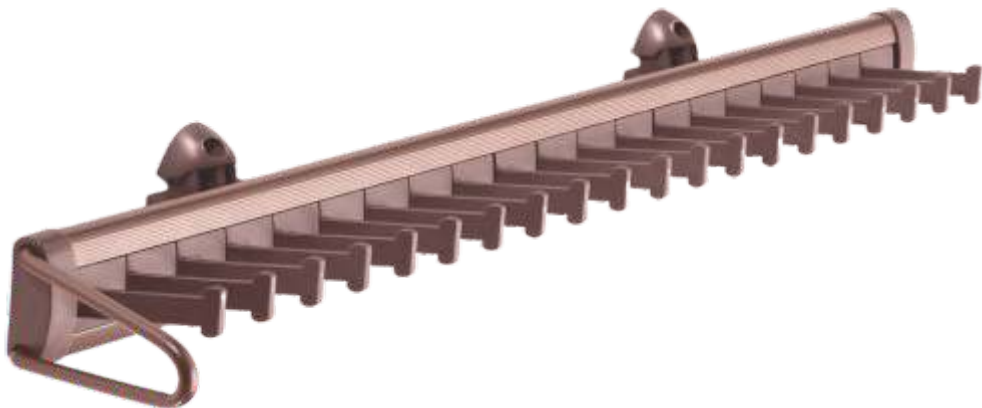
The rack's slim design ensures it takes up minimal space, equivalent to a single piece of clothing.

Material

Constructed from high-purity PVC material, the tie rack is both tough and stable, with a stylish appearance.

Installation

The tie rack can be installed on either side of the wardrobe, allowing for flexible and personalized placement.





Iron Board



Iron Board

Product Name: Iron Board

Model No. – GH – 1204

Colour – Grey

Dimension (mm)	W	D	H
(1204)	295	430	140

Functional Features

Design

Fashion simple design, reasonable use of space, hidden folding and rotation, use at will, know how to collect, know how to hide, easy to use.

Function

To achieve butter damping effect under the stretch process, set up with high- grade gas spring.

Feature

The product panel can be rotated 90 degrees. Push-pull folding, pull out and turn when used, fold back when not used.

Material

Fine canvas with built-in sponge. Multilayer wood composite plate + stainless steel. ABS plastic: Impact resistance, heat resistance, low temperature resistance, chemical resistance.

Installation

The Installation is simple, convenient and fast, and only a few screws are needed to fix it.





Vaccum Button, Bracket & Hood



Vaccum Button

Product Name: Vaccum Button

Model No. – 803 B Small & 801 Big

Colour – Matt Silver (803B) & Chrome (801)

Dimension (mm)	W	D	H
(1204)	295	430	140

Functional Features

Long Lasting Life.

Easy To Install

Made Of Zinc alloy And plastic

Glass Fitting

Glass Shelf Bracket is It's suitable for all kind of Glass, Board, Wardrobe, Cupboard, Furniture

Strong, Durable , Long Lasting, Rust Free



Bracket

Product Name: Bracket

Model No. – 111 & 112

Colour – 111 SN, 112 CP

Functional Features

Installation Guide (DIY – Do it Yourself) can be referred for easy installation, necessary screws & wall-plugs are provided in the package

Cleaning instructions: Wipe with a soft, dry or slightly damp cloth to protect finish, avoid the use of household chemical cleaning agents.

<https://s.alicdn.com/@sc04/kf/Hb8fd8fe4ff8947d8873f1bef22ca07b7Q.jpg>



Model No. – 111



Model No. – 112

Bracket

Product Name: Bracket

Model No. – 103C

Colour – AP & CP

Functional Features

Installation Guide (DIY – Do it Yourself) can be referred for easy installation, necessary screws & wall-plugs are provided in the package

Cleaning instructions: Wipe with a soft, dry or slightly damp cloth to protect finish, avoid the use of household chemical cleaning agents.



Colour – AP



Colour – CP

Bracket

Product Name: Bracket

Model No. – GH-121-16

Colour – GP & CP

Functional Features

Perfect for fixing curtains pole directly inside the two recess brackets, or onto adjacent walls if there is limited or no space above or beside the windows.

Simple design, decorates your curtain rod, makes it neat and fashionable.



Colour – CP



Colour – GP

Hooks

Product Name: Hooks

Model No. – 301

Colour – CP, GP & AC

Functional Features

Material: These heavy duty dual prong hooks are made of good quality zinc die cast material, the screws are made of iron, it can easily hold up to 40 lbs of weight. Hard and durable, can widely support coat, scarf, umbrella, bag, towel, key, hat, cup as well as Christmas socks and Christmas wreath

Easy for installation



Hooks

Product Name: Hooks

Model No. – 304

Colour – BK, PN

Functional Features

Multiple Applications: These retro hooks design with double hooks, perfect for use in bathroom, bedroom, closet, foyer, entryway, fence hanging towels, coat, hats, purse, jackets, robe, back packs. (DIY) pellet coat rack, and make them easy to find. These double hooks is a good way to store your space

Easy to Install – They fit on wood, drywall, wall stud and other wall types neatly and quickly. Comes with necessary hardware.



Colour – BK



Colour – PN





Digital Locker



Digital Locker

Product Name: Digital Locker

Model No. – ZX-8901

Colour – Metal Colour – Black & Grey

Cloth Colour – Red

Big Size (mm)	W	D	H
	580	400	150
Small Size (mm)	W	D	H
	450	400	150

Functional Features

Design

The Internal Installed external battery design, the replacement of the battery more convenient, effective prevention of leakage.

Function

Digital password control switch. The side mounted external manual key is convenient for manual opening.

Feature

Hidden In the drawer safe, embedded installation, touch-t type digital keys, Anquanzhishu, guard your valuables.

Material

Iron/Leather

Installation

The installation is simple, convenient and fast, and only a few screws are needed to fix it.



Digital Locker (Leather)

Product Name: Digital Locker (Leather)

Model No. - ZX-8901

Colour - Grey, Orange

Big Size (mm)	W	D	H
	580	400	150

Functional Features

Design

The Internal Installed external battery design, the replacement of the battery more convenient, effective prevention of leakage.

Function

Digital password control switch. The side mounted external manual key is convenient for manual opening.

Feature

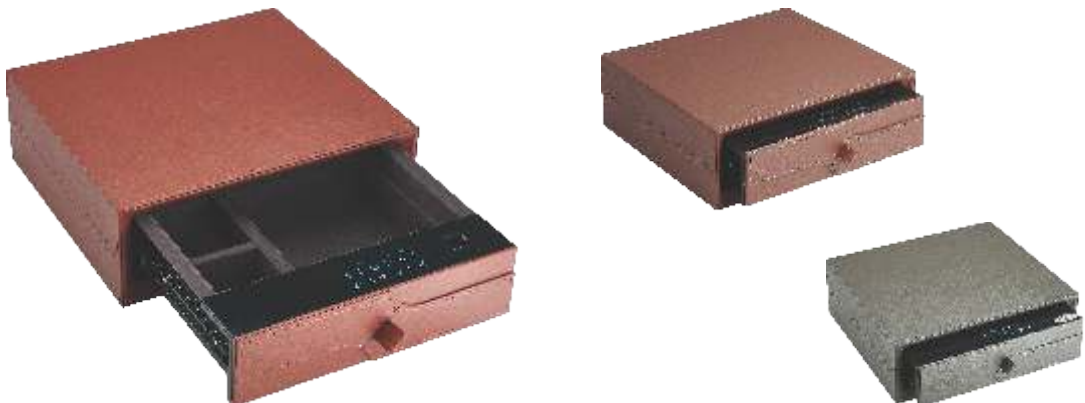
Hidden In the drawer safe, embedded installation, touch-t type digital keys, Anquanzhishu, guard your valuables.

Material

Iron/Leather

Installation

The installation is simple, convenient and fast, and only a few screws are needed to fix it.





22+ Years of Experience

450+ Happy Dealers

300+ Products

2500+ SKU's

www.gvihardwares.com



WEBSITE



@GVIHARDWARES



WHATSAPP